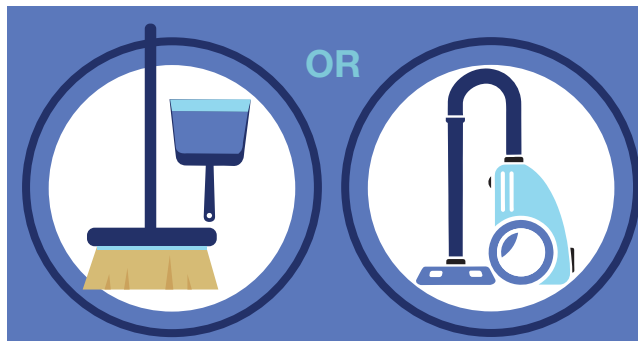


POLYSAFE FOR WET ROOMS NO PUR



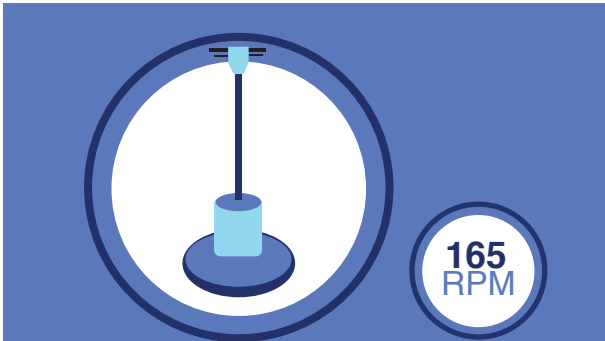
MAINTENANCE REGIME



- 1** Remove all loose debris.
 > Sweep or vacuum to remove dust and grit.
 > Spot scrub regularly with a deck brush.



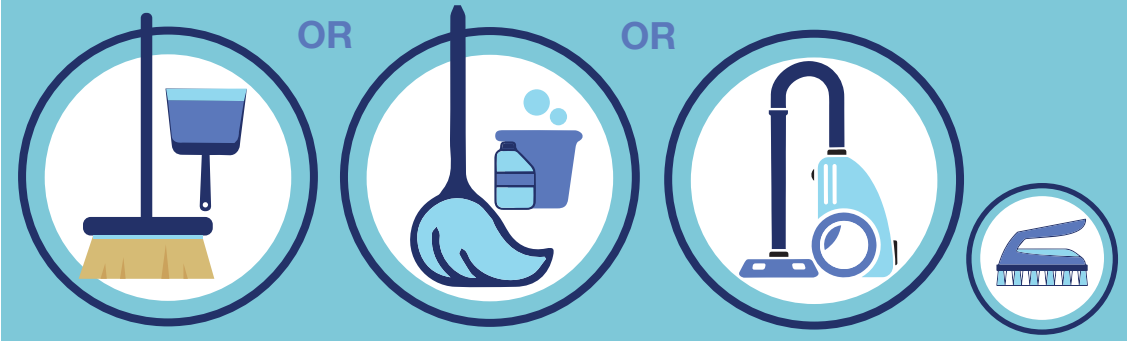
- 2** Apply a solution of alkaline cleanser to the floor
 > Leave for sufficient time to react with the soiling.



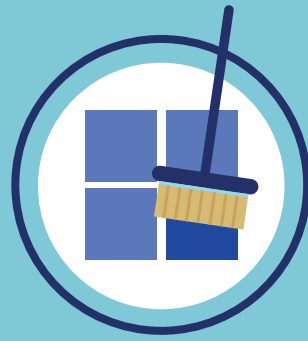
- 3** Use a 165 rpm rotary machine fitted with a rotary scrubbing brush or a cylindrical type scrubbing machine and scrub the floor.



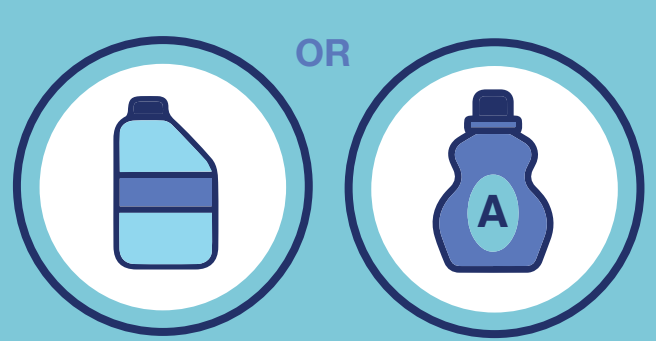
- 4** Rinse the floor thoroughly with clean warm water
 > Pick up with a wet vacuum and leave to dry thoroughly.



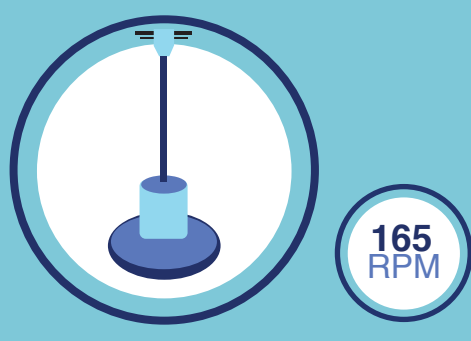
- 1** Sweep, mop sweep or dry vacuum the floor, to remove dust and loose dirt.
 > Using a scrubbing brush or a cylindrical type scrubbing machine.



- 2** Spot scrub regularly with a deck brush.



- 3** Apply a solution of neutral or alkaline cleanser to the floor
 > Leave for sufficient time to react with the soiling.



- 4** Use a 165 rpm rotary machine fitted with a rotary scrubbing brush or a cylindrical type scrubbing machine and scrub the floor.



- 5** Rinse the floor thoroughly with clean warm water.
 > Pick up with a wet vacuum and leave to dry thoroughly.



> Always follow the Health and Safety guidance provided.
 > Maintainers, polishes or floor dressings containing polish should never be applied to Polysafe PUR ranges, as this may impair slip resistance.
 > Cleaners and detergents should be diluted to the manufacturer's instructions and left for sufficient time to react with the soiling.
 > A twister or any other abrasive pad containing diamond shreds should not be used on any Polysafe ranges under any circumstances.

If in doubt please contact Polyflor Canada.

For more detailed information visit, www.polyflor.ca or e-mail tech@polyflor.ca with any maintenance questions.

Polyflor Canada Inc.
 Tel: +1 905 364 3000
 Email: sales@polyflor.ca